

ALEXAN
RIVEREDGE

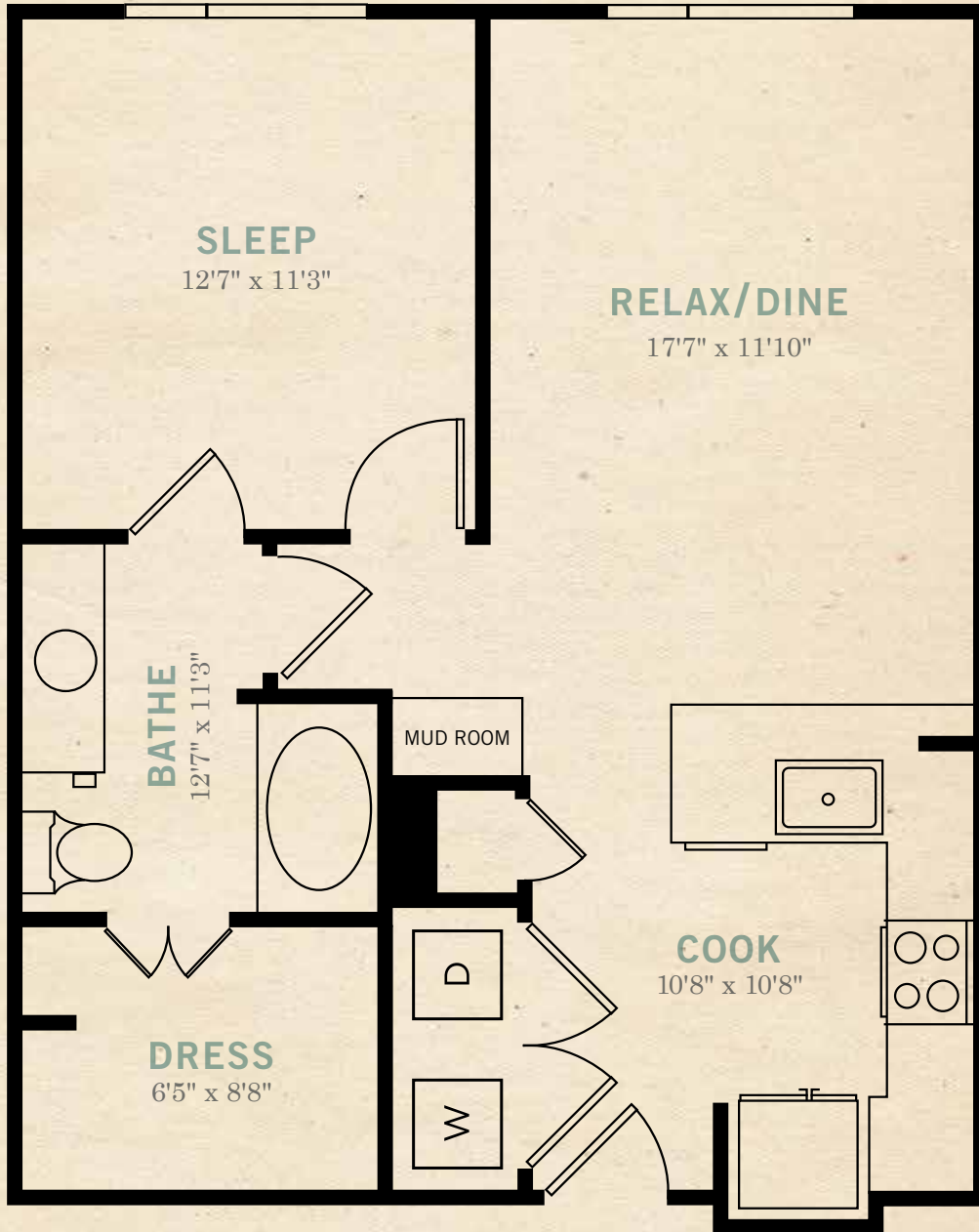
R

1 BR, 1 BA

INTERIOR - 706 S.F.

UNIT PLAN

A2b



FINISHES OPTION 1

FINISHES OPTION 2



FLOORING



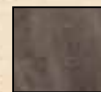
COUNTERTOP



CABINET



BACKSPLASH



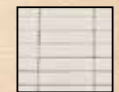
FLOORING



COUNTERTOP



CABINET



BACKSPLASH

\$

RENT/MO

\$

DEPOSIT

TCR
TRAMMELL CROW'S RESIDENTIAL
ALEXAN



PET FRIENDLY

120 TURTLE CREEK BLVD.

DALLAS, TX 75207

214-741-4400

AlexanRiveredge@greystar.com

AlexanRiveredge.com

ALEXAN
RIVEREDGE

UNIT TYPE: A2b



COMMUNITY MAP KEY

COMMUNITY MAP LAYOUT

- Gather in the large, open Clubroom
- Sync in the WiFi Lounge
- See the view from the Outdoor Skyline Terrace
- Float in our Resort-style Pool featuring Private Cabanas
- Meet and greet at the Street Level Plaza
- Slow your ride in Bike Parking
- Sweat at the Strength & Cardio Gym
- Stretch at the Yoga Studio
- Charge at the Electric Car Charging Stations
- Relax in the Resident Lounge Areas complete with TVs
- Scrub at the Dog Wash
- Get moving at the Dog Run
- Grill at the Outdoor Kitchen & Grilling Areas complete with TVs
- Dominate at the Covered Outdoor Bar with Ping Pong
- Warm up at our Courtyard Fire Pits



A2b



120 TURTLE CREEK BLVD.

DALLAS, TX 75207

214-741-4400

AlexanRiveredge@greystar.com

AlexanRiveredge.com